

# Haiti Suffers Yet Another Devastating Blow-- Hit by 7.0 Earthquake Yesterday

January 13, 2010

As you may know, the Church of God of Prophecy has a significant presence in the nation of Haiti—our most recent statistic indicating 58,000 members—much of which live in the Port-au-Prince region, along with our Orphanage being located in this region, as well, caring for 68 orphaned children.

In a nation already challenged by limited infrastructure, extreme poverty, past devastating hurricanes and flooding, the 7.0 earthquake which struck yesterday has only exacerbated the difficulty that our brothers and sisters already faced on a daily basis. Due to all communication lines being down in the Port-au-Prince area, we still have NOT been able to make contact with our National Overseer. From the news reports, our fears are that there is much loss of life and property, but our faith must rise and reach up to the One who is ultimately in control. Your urgent prayer support is vital at this very moment!

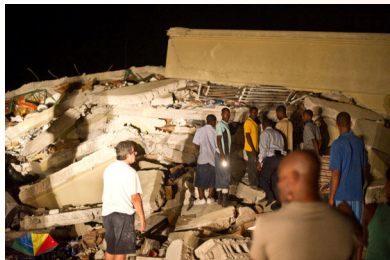
Certainly, we appreciate your patience as we make every effort possible to make connections and supply you with correct information about our brothers and sisters in Haiti. As is our general rule, we will be providing E-mail updates along with website *Connection* updates and posts as soon as we receive them.

As with any disaster of this magnitude, your financial gifts are deeply appreciated to help assist our Church people in this grave time of need. You can contribute online through our Church website: [www.cogop.org](http://www.cogop.org) and also, through our standard procedures of the International Offices. Individuals may contribute through our Helping Hand Ministry and local churches through Harvest Partners [Level Two] Ministry. Please designate your financial contribution for this need as follows:

### Haiti—Disaster Relief—2010 Earthquake

*Note that all gifts are tax deductible and 100% of your gift is applied to the need you specify.*

The following photos have been gleaned from the Internet and are not official COGOP photos, but are shared to give you an idea of the catastrophic conditions that we are facing in Haiti.



Collapsed Supermarket



Collapsed School



Collapsed Buildings



Rescue Efforts



Contact Info:

**Global Outreach Ministries**

Church of God of Prophecy International Offices  
PO Box 2910 | Cleveland | TN | 37320-2910

Phone: 423.559.5205 | Fax: 423.559.5238

E-mail: [global@cogop.org](mailto:global@cogop.org) -or- [harvestpartners@cogop.org](mailto:harvestpartners@cogop.org)